

QDL Services

Venue Hire Brochure

January 2024

Table of Contents

[Table of Contents](#)

[Overview](#)

[Large Room \(up to 30 people\)](#)

[Large Room details:](#)

[Large Room gallery](#)

[Small Room \(up to 20 people\)](#)

[Small Room details:](#)

[Small Room gallery](#)

[Container Room \(up to 22 people\)](#)

[Container details:](#)

[Container gallery](#)

[Portacabin \(up to 6 people\)](#)

[Container details:](#)

[Portacabin gallery](#)

[Yard](#)

[Container details:](#)

[Yard gallery](#)

[Booking and Contact information](#)

[Website](#)

[Eventbrite](#)

[Contact Helen](#)

Overview

QDL Services and QDL Training is located at 120 Beddington Lane, Croydon, CR9 4ND with great access by road and public transport.

Whether you're planning a corporate gathering, a team-building session, or a gaming club; our rooms can accommodate your needs. The open plan spaces allows for you to adjust your layout to meet your needs, ensuring a comfortable and productive atmosphere.

No matter which room you choose, the following can be supplied without extra cost:

- Free onsite parking
- Toilets, hand wash, and toilet roll
- Chairs and tables (2 sizes of tables available)
- Tea, coffee, milk and sugar
- Filtered water
- Wi-Fi
- HD Projector and screen
- HDMI connection and power sockets for presentations (computer not supplied)

We are also within close proximity to multiple other services:

- Asda Superstore (includes McDonalds and petrol station) – 2 mins drive
- Harvest Home pub (good cafe in the car park and BP station nearby) – 2 mins drive
- The Plough pub (many other takeaways and shops surrounding) – 3 mins drive
- Valley Retail Park (Nando's, McDonalds, Pizza Express) – 5 mins drive

We can also organise catering and have many local food delivery options.

Venue Hire is usually between 9am to 5pm. This is flexible.

Please contact helen@qdlservices.com for more information and bookings.



Large Room (up to 30 people)

Looking for a spacious venue to host your next event? Look no further!

QDL Services Ltd is thrilled to offer our large room for hire. With a capacity of up to 30 people, our venue is perfect for meetings, workshops, or training sessions.

Located at QDL Services Ltd, our venue provides a comfortable and professional environment to ensure your event is a success. Our large room is equipped with all the necessary amenities, including audiovisual equipment and high-speed internet access.

Whether you're planning a corporate gathering or a team-building session, our large room can accommodate your needs. The flexible seating arrangement allows for various setups, ensuring a comfortable and productive atmosphere.

Don't worry about the logistics - our friendly staff is here to assist you every step of the way. Just let us know your requirements, and we'll take care of the rest.

Book our large room today for your upcoming event! Contact us now to check availability and make a reservation.

Large Room details:

Size - 47.56 m² / 512 ft²

Capacity - up to 30 people without desks or tables

Location - main building, second floor. No lift available.

Large Room gallery





Small Room (up to 20 people)

Looking for a space to host your next event? Look no further!

Join us at QDL Services Ltd for our Room Hire (Small Room up to 20 people)

Whether you're planning a team meeting, workshop, or a brainstorming session, our small room is perfect for intimate gatherings.

With a maximum capacity of 20 people, our small room provides an intimate setting that promotes interaction and collaboration. It's the ideal space for fostering creativity and exchanging ideas.

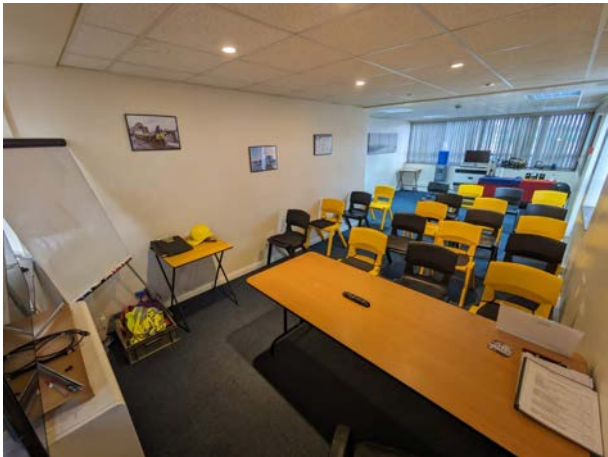
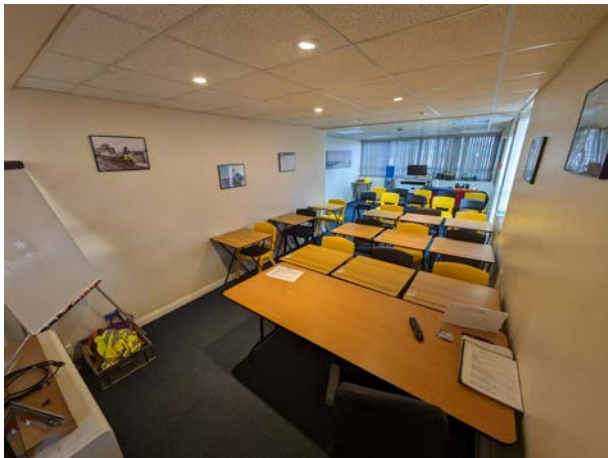
Small Room details:

Size - 39.02 m² / 420 ft²

Capacity - up to 20 people without desks or tables

Location - main building, second floor. No lift available.

Small Room gallery





Container Room (up to 22 people)

Looking for a space to deliver a training session, a video viewing, or hold an off site meeting? Look no further!

Ideal for those meetings where you don't want to be disturbed or for those training sessions where you'll need a screen for presentations to group.

Even better is adding on our Yard hire (page 12) for those subjects and sessions requiring an outside space for demonstrations and practice.

With a maximum capacity of 22 people, our Container room provides an open plan space that promotes interaction and collaboration. It's the ideal space for fostering creativity and exchanging ideas.

Container details:

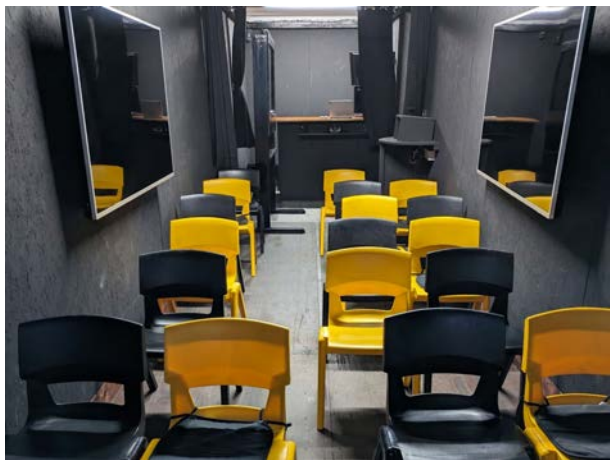
Size - 29.73 m² / 320 ft²

Capacity - up to 22 people without desks or tables

Location - yard, ground floor.

1 projector and up to 4 wall mounted TV screens available for use

Container gallery





Portacabin (up to 6 people)

Ideal for those meetings where you don't want to be disturbed or for those training sessions where you'll need a screen for presentations for a small group.

Even better is adding on our Yard hire (page 12) for those subjects requiring an outside space for demonstrations and practice.

With a maximum capacity of 6 people, our Portacabin provides an intimate setting that promotes interaction and collaboration. It's the ideal space for fostering creativity and exchanging ideas.

Container details:

Size - 27.87 m² / 300 ft²

Capacity - up to 6 people without desks or tables

Location - yard, first floor. No lift available.

Kitchenette

Portacabin gallery





Yard

Our Yard is more of an add-on space for the other available for hire rooms and only includes the following facilities:

- Free onsite parking
- Toilets, hand wash, and toilet roll

Ideal space for, but not restricted to:

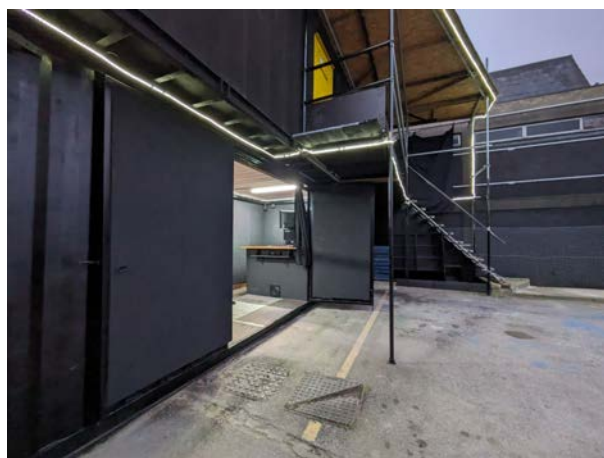
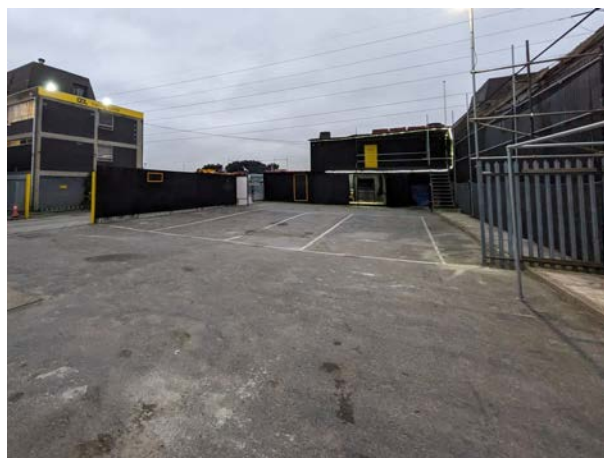
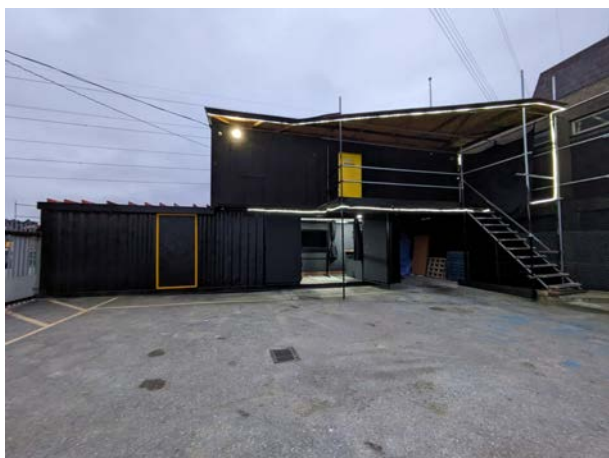
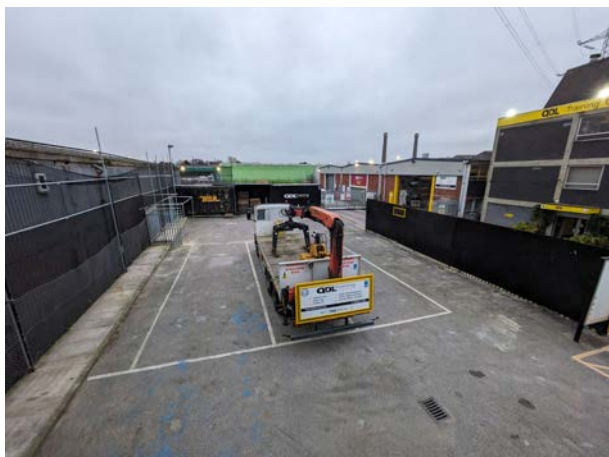
- Private parking
- Industrial plant training (you will need to supply all training equipment)
- Cycle instruction (you will need to supply all training equipment)
- Other training requiring an outdoor space.

Container details:

Size - 334.45 m² / 3600 ft²

Location - yard, ground floor.

Yard gallery



Booking and Contact information

Website

Venue hire can be found on our website along with all our other services:

<https://qdl-services.com/>

Eventbrite

All spaces and available dates can be found on our Eventbrite account:

<https://www.eventbrite.co.uk/o/qdl-training-ltd-17576863767>

Contact Helen

Helen Hancock is our General Manager and organises the venue hire bookings.

You can contact her for more information and bespoke bookings:

Email: helen@qdl-services.com

Tel: [020 8611 2542 \(option 1\)](tel:02086112542)

Mob: [07950 880367](tel:07950880367)